

2018
Community Protection Program
Prescribed Fire Grant
Summary



Table of Contents

2018 Community Protection Program- Prescribed Fire Grant Summary Report.....	3-6
Treatment Photographs.....	7



2018 Community Protection Program

Grant Funded Through USDA – Forest Service

Award #15-DG-11083148-007, #16-DG-11083148-007, & #17-DG-11083148-003

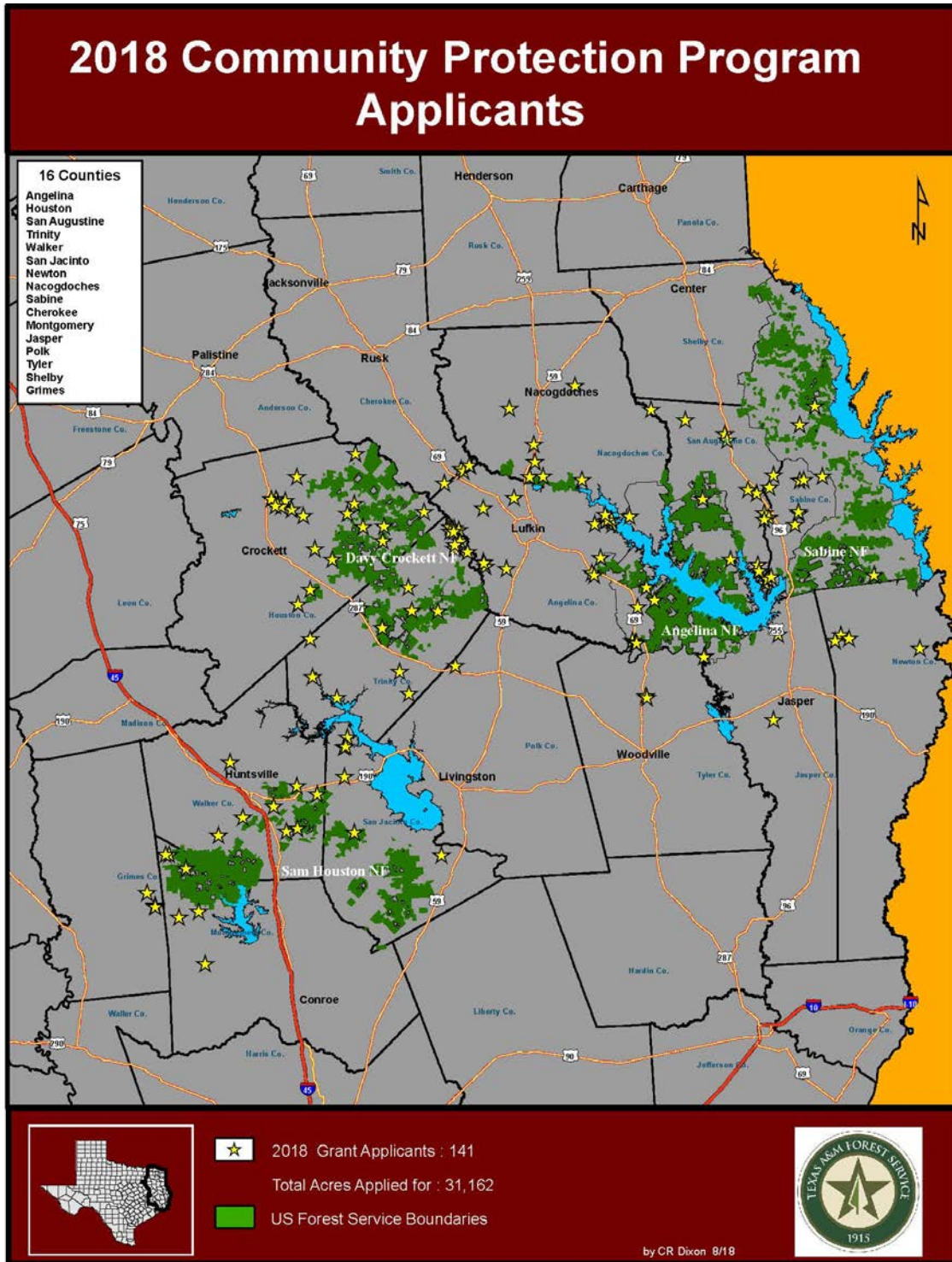
CFDA #10.664

The Community Protection Program is intended to protect natural resources, local communities, and national forest land within the Wildland Urban Interface. One method used to mitigate this hazard is prescribed burning. Prescribed burning is one of the most effective tools land managers have to reduce the threat of catastrophic wildfires. By removing vegetation that builds up in the forest understory over time, these prescribed burns help protect the National Forest and surrounding communities from the dangers of large wildfires. The four National Forests in Texas are the Angelina National Forest, Davy Crockett National Forest, Sabine National Forest, and Sam Houston National Forest.

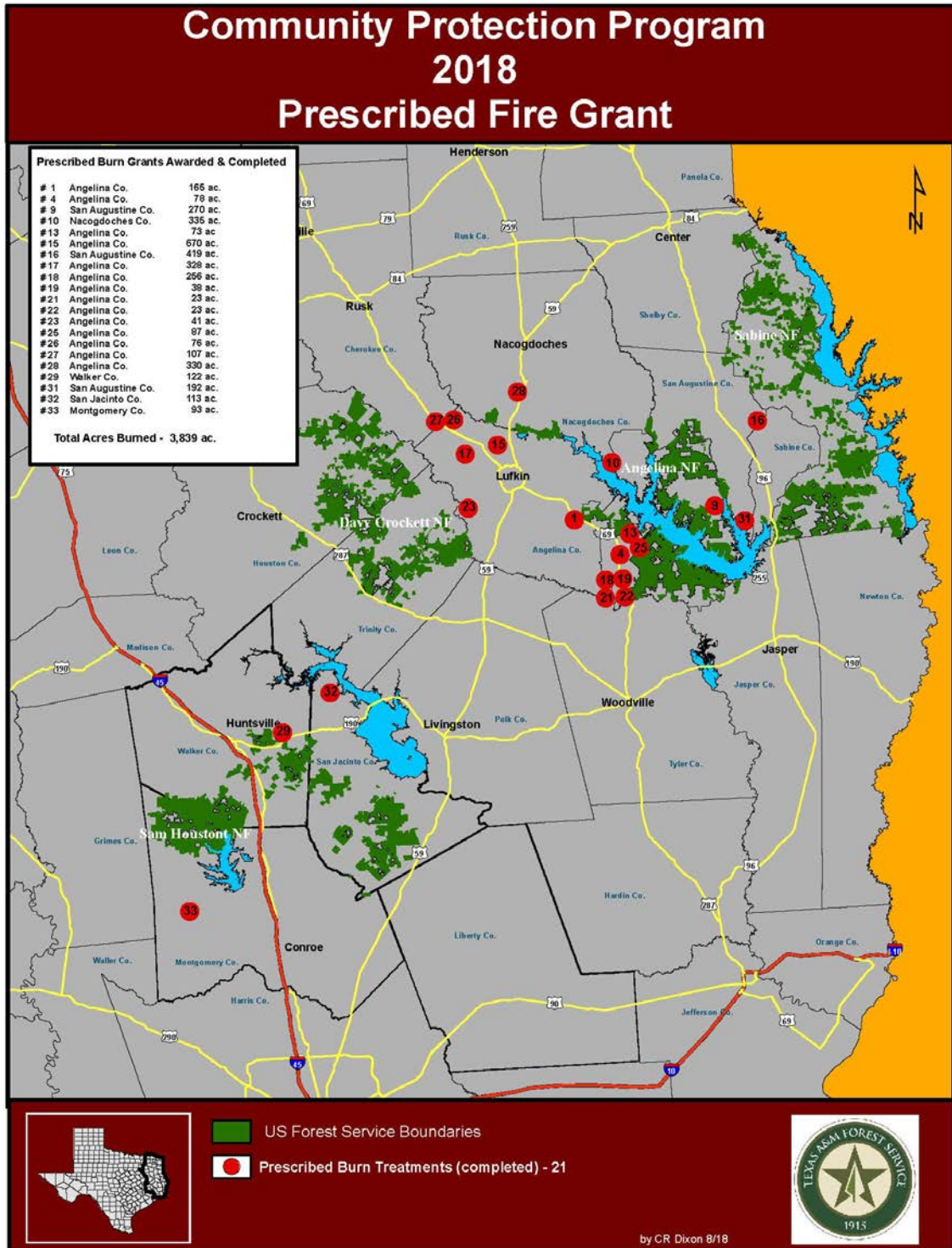
As part of the Texas A&M Forest Service’s (TFS) Community Protection Program, a ranking matrix was used to determine which prescribed burn treatments on private land would be most effective in accomplishing this goal. Major factors in this ranking included the property being within a 10 mile radius of a national forest, the use of the Texas Wildfire Risk Assessment Portal (TxWRAP) to determine the density of structures near the property, completion of a Community Wildfire Protection Plan (CWPP) in the county or local community, along with the submission of a comprehensive burn plan. Also, during the previous grant cycle, several grantees did not complete their prescribed burn treatments due to weather conditions. Any of these same landowners that re-applied for funding received immediate approval if their applications were complete. TFS gave no extensions to agreements.



TFS's Community Protection Program- Prescribed Fire Grant opened for applications on September 11, 2017 with a deadline to apply on or before October 13, 2017. A total of **141 applications** were received from **16 East Texas Counties**. Of these, **33 applications were approved** based on the criteria in the ranking matrix. The approved landowners had until July 31st, 2018 to complete their prescribed burn treatment.



The 2018 Community Protection Program– Prescribed Fire Grant accomplishments include **21 landowners** completing prescribed burn treatments for a total of **3,839 acres** in East Texas. The grant program allowed these landowners to be reimbursed at a rate up to \$30.00 per acre, for a total of **\$115,170.00** paid through the grant funding process.



Detailed Breakdown of the Grant Program for 2018:

- 141 applications were received by TFS
- 33 prescribed burn treatment agreements were approved by TFS
- 21 of these 33 sites completed prescribed burn treatments
- 12 of these 33 landowners were not able to complete the burn treatments

List of Prescribed Fire Treatments Completed by County:

- Angelina – 13 burns, 1,965 acres
- Montgomery – 1 burn, 93 acres
- Nacogdoches – 2 burns, 665 acres
- San Augustine – 3 burns, 881 acres
- San Jacinto – 1 burn, 113 acres
- Walker – 1 burn, 122 acres



Landowners who were not able to complete the prescribed burns during the stated contract period were encouraged to apply for the 2019 Community Protection Program. These applications will receive priority when TFS selects the appropriate sites to fund.

Contributors:

Andy McCrady
Fuels Coordinator II
Texas A&M Forest Service

Tammy Russell
Business Associate III
Texas A&M Forest Service

Bobby Dixon
Resource Specialist
Texas A&M Forest Service

Project support provided by the U.S. Department of Agriculture, Forest Service, Southern Region, State and Private Forestry Program. This institution is an equal opportunity provider.

Pre and Post Treatment Photos



Mid-rotation loblolly pine plantation, Angelina County, 670 acres



Loblolly pine plantation burned following first thinning, San Augustine County, 270 acres



Longleaf pine plantation, Angelina County, 23 acres